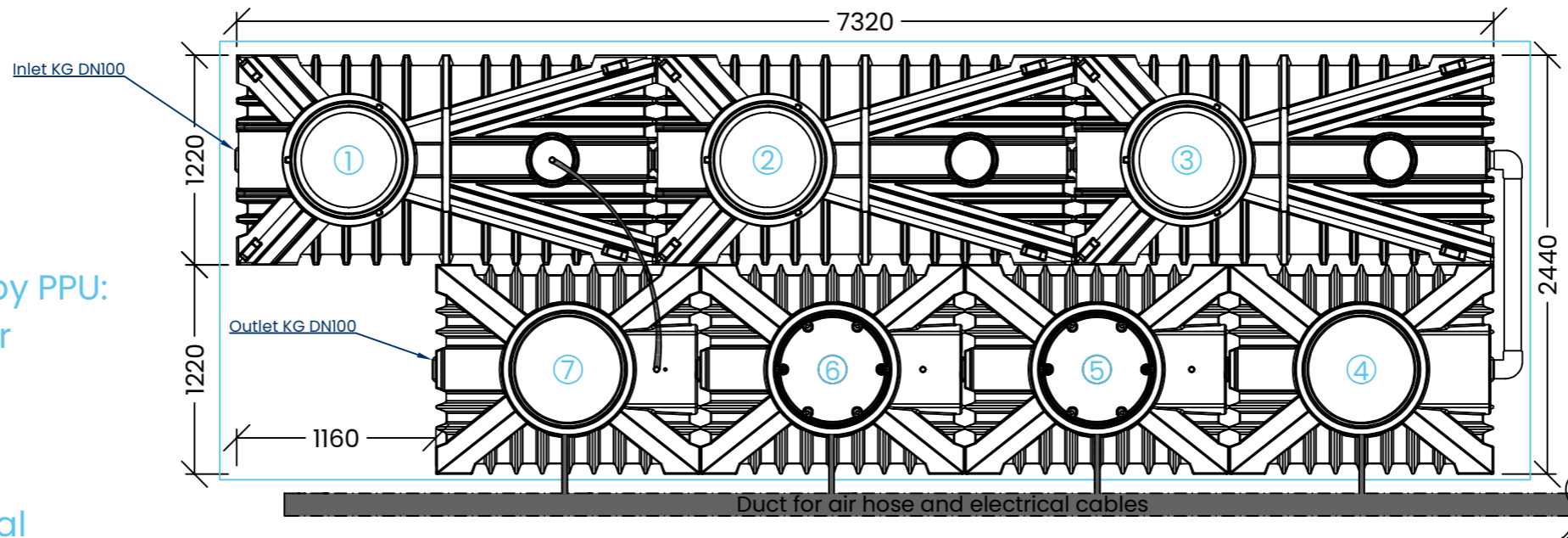
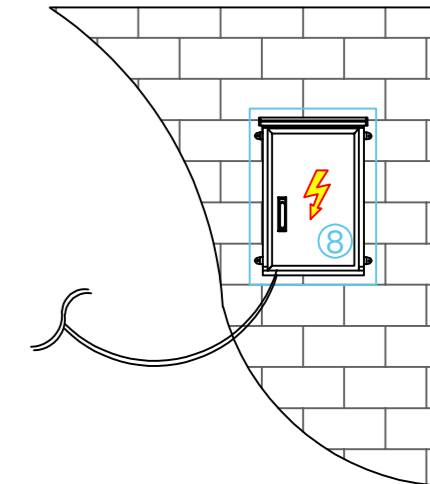


This drawing is our property and may not be reproduced or made accessible to third parties without permission.

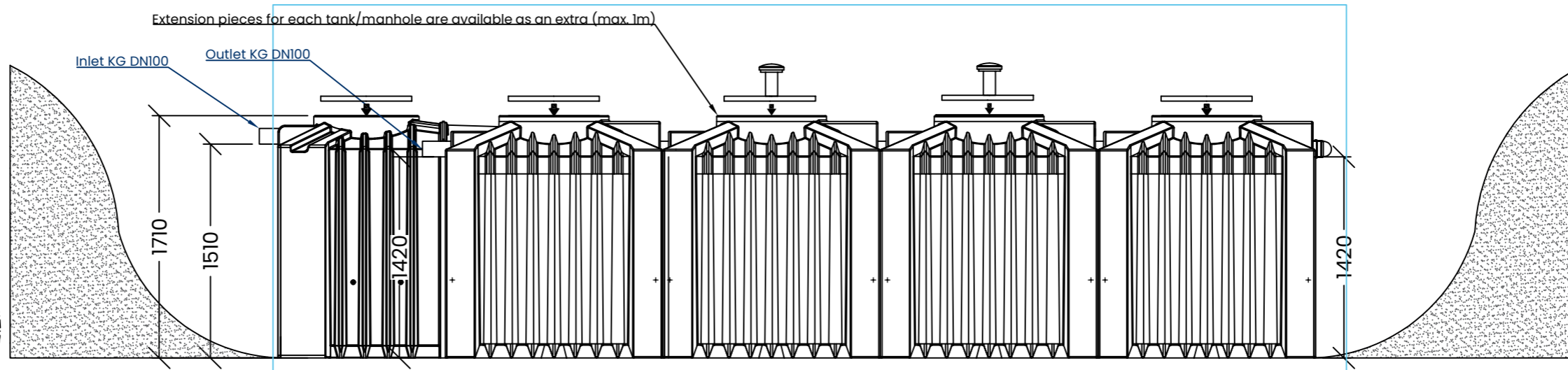
Scope of delivery by PPU:
 1.)- 4.) Prechamber
 5.) - 6.) FBBR
 7.) Clarifier
 8.) Cabinet with installation material



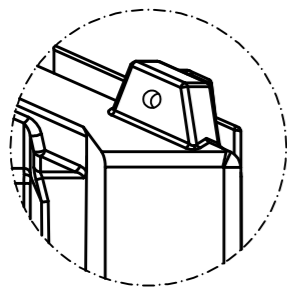
Electrical:
 ⚡ 230V / 1 phase / 50 Hz / Fuse 10A / 3x 1,5 mm²
 Cabinet: 700x500x300
 [contains air compressor, PLC, electrical panel]
 (cable and pipes for 8m are included)



Top view



Side view



Lifting eyes for transport by crane are integrated into each tank.

Specification

- Population range: 75 people
- Max. organic load: BOD₅ 4.2 kg/day
- Max. nitrogen load: N 0.41 kg/day
- Max. average daily flow: 11.25 m³/day
- Max power usage: 5.1 kWh/day
- Total connected load: 0.73 kW
- Total capacity: 19.5 m³

Notes

- System combines 4x AP2250 tanks and 3x AP3500 tank
- AP 2250: 1540 x 1220 x 1710 mm (lxbxh)
- AP 3500: 2430 x 1220 x 1710 mm (lxbxh)
- Total system weight: ~ 1230 kg
- Operating weight: ~ 19500 kg
- Biggest single weight: 210 kg

						Material
						DIN A4
				Draw	28.08.25	PEN
				Chek.		Part-No.:
						Description
						AP System
						75 PE / Q20 / C+N / Prechamber
						by PPU
0	Document created	28.08.25	PEN			
Rev	Change	Date	Name	File: ZE_20250820_75PE_Q20_C_PrebbyPPU		Page 1 / 1